



## OPEN ACCESS

EDITED BY  
Mariarita Tarallo,  
Sapienza University of Rome, Italy

REVIEWED BY  
Jianyong Lei,  
Sichuan University, China  
Ludovico Docimo,  
University of Campania Luigi Vanvitelli,  
Italy

\*CORRESPONDENCE  
Yong Jiang  
yjiang8888@hotmail.com  
Zhen Qu  
quzhen5014@126.com

SPECIALTY SECTION  
This article was submitted to  
Surgical Oncology,  
a section of the journal  
Frontiers in Oncology

RECEIVED 15 May 2022  
ACCEPTED 06 September 2022  
PUBLISHED 28 September 2022

CITATION  
Feng J-W, Ye J, Hong L-Z, Hu J,  
Wang F, Liu S-Y, Jiang Y and Qu Z  
(2022) Nomograms for the prediction  
of lateral lymph node metastasis in  
papillary thyroid carcinoma:  
Stratification by size.  
*Front. Oncol.* 12:944414.  
doi: 10.3389/fonc.2022.944414

COPYRIGHT  
© 2022 Feng, Ye, Hong, Hu, Wang, Liu,  
Jiang and Qu. This is an open-access  
article distributed under the terms of  
the [Creative Commons Attribution  
License \(CC BY\)](https://creativecommons.org/licenses/by/4.0/). The use, distribution  
or reproduction in other forums is  
permitted, provided the original  
author(s) and the copyright owner(s)  
are credited and that the original  
publication in this journal is cited, in  
accordance with accepted academic  
practice. No use, distribution or  
reproduction is permitted which does  
not comply with these terms.

# Nomograms for the prediction of lateral lymph node metastasis in papillary thyroid carcinoma: Stratification by size

Jia-Wei Feng, Jing Ye, Li-Zhao Hong, Jun Hu, Fei Wang,  
Sheng-Yong Liu, Yong Jiang\* and Zhen Qu\*

The Third Affiliated Hospital of Soochow University, Changzhou First People's Hospital,  
Changzhou, China

**Background:** Lateral lymph node metastasis (LLNM) is a risk factor of poor prognosis in papillary thyroid cancer (PTC). We aimed to determine predictive factors and develop the nomograms for LLNM in patients with papillary thyroid microcarcinoma (PTMC) and macro-PTC.

**Methods:** We reviewed the medical records of 1,106 patients who underwent surgery between January 2019 and January 2022. Patients were divided into a PTMC and a macro-PTC group. We developed preoperative and postoperative nomograms for predicting LLNM based on results of multivariate analysis. Internal calibration was performed for these models.

**Results:** The number of metastatic lymph nodes in lateral compartment was higher in macro-PTC patients. LLNM was independently associated with gender, the number of foci, location, shape, and central lymph node metastasis (CLNM) in PTMC patients. For macro-PTC patients, chronic lymphocytic thyroiditis, the number of foci, location, margin, CLNM, and central lymph node ratio were all independent predictors for LLNM. All the above factors were incorporated into nomograms, which showed the perfect discriminative ability.

**Conclusion:** The diameter of the tumor has an impact on the rate of LLNM. Separate predictive systems should be used for PTMC and macro-PTC patients for more accurate clinical assessment of lateral lymph node status. Through these nomograms, we can not only detect high-risk patients with occult LLNM preoperatively, but also form appropriate treatment protocols for postoperative management of PTC patients with different risks.

## KEYWORDS

papillary thyroid carcinoma, papillary thyroid microcarcinoma, lateral lymph node metastasis, nomogram, surgery

## Introduction

The incidence of papillary thyroid cancer (PTC), which accounts for approximately 80.0% of thyroid cancers, has been increasing worldwide in recent decades (1). Although most patients with PTC have a good prognosis, the incidence of lymph node metastasis (LNM) is high, ranging from 20% to 90% (2–6). As reported, PTC patients with lateral lymph node metastasis (LLNM) had higher incidence of disease persistence, recurrence, and distant metastasis when compared to patients with or without central lymph node metastasis (CLNM) (7).

Unless suspicious LLNM is confirmed by preoperative fine needle aspiration cytology (FNAC), prophylactic lateral neck dissection (LND) is not recommended for patients with clinically negative (cN0) lateral neck (1). However, the incidence of occult LLNM was reported to be as high as 30.4% among PTC patients (8). Considering the presence of occult LLNM, which was hardly detected in the preoperative period, some patients who undergo thyroidectomy may detect the residual metastatic lymph nodes in the lateral compartment (9). Therefore, establishing predictive models for early detection of LLNM and residual risk is critical.

Tumor size is an important factor among the clinical and pathological features that can be assessed preoperatively and intraoperatively. With the increasing detection rate of papillary thyroid microcarcinoma (PTMC) ( $\leq 10$  mm diameter) (1), the optimal treatment strategy of PTMC, especially whether PTMC needs surgery, remains controversial. Active surveillance has been recommended as a reasonable alternative approach to immediate surgery for low-risk PTMC according to a 10-year observational study (10). The possibility of LNM during active surveillance is a major concern for clinicians and patients. Clinically apparent lymph nodes re-stratified patients with PTMC from low risk to intermediate risk according to the 2015 American Thyroid Association (ATA) risk stratification (1). In addition, macro-PTC ( $>10$  mm diameter) is more vulnerable to aggression. According to the previous research, tumor size was the best predictor of CLNM and LLNM and was significantly associated with lymph node recurrence (11). Therefore, we assumed that clinicopathological features may be different between PTMC and macro-PTC patients, and the clinical management of PTMC patients should be differentiated from macro-PTC patients.

Unlike previous studies that only determined risk factors of LLNM, we first aimed to investigate the differences in clinicopathological features between PTMC and macro-PTC patients, especially differences in LNM. Then, we aimed to perform subgroup analysis on this basis, investigating the risk factors for LLNM in PTMC and macro-PTC patients, respectively. Finally, we attempted to develop nomograms to predict LLNM. Through these accurate and easy-to-use nomograms, we can proactively detect high-risk patients with

occult LLNM preoperatively and form appropriate treatment protocols for postoperative management of PTC patients with different risks.

## Materials and methods

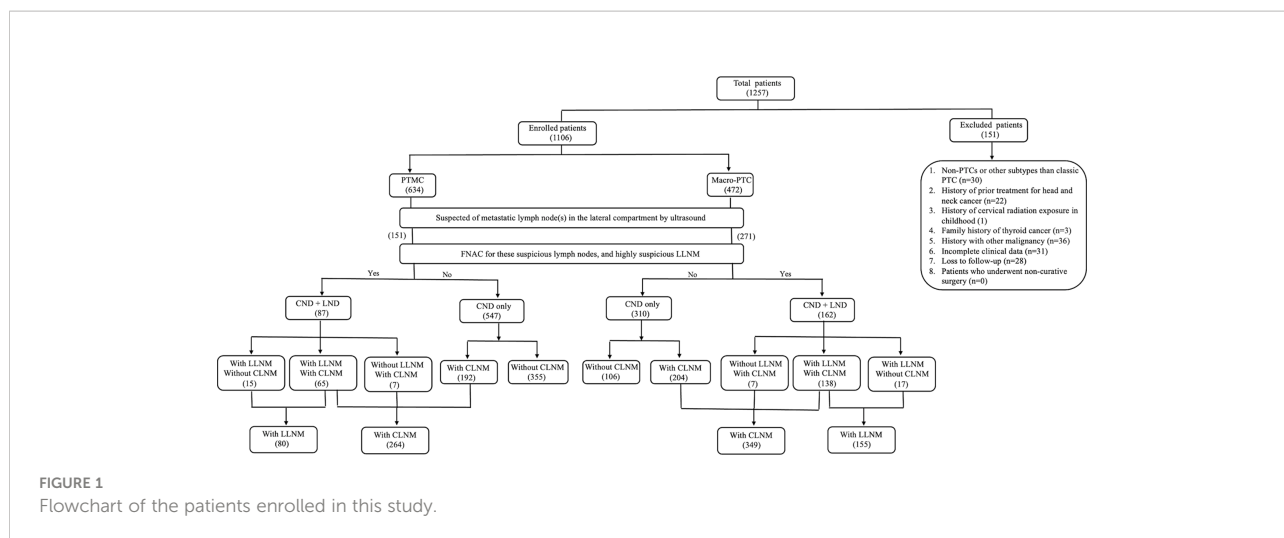
### Study design

This retrospective study was approved by the Institutional Review Board of Changzhou First People's Hospital, and the need for informed consent was waived due to the retrospective nature of this study. We retrospectively reviewed the medical records of 1,257 patients with pathologically proven PTC who underwent primary surgical treatment at our institution between January 2019 and January 2022. The following exclusion criteria were applied: (1) non-PTCs or other subtypes than classic PTC; (2) history of prior treatment for head and neck cancer; (3) history of cervical radiation exposure in childhood; (4) family history of thyroid cancer; (5) history with other malignancy; (6) incomplete clinical data; (7) loss to follow-up; and (8) patients who underwent non-curative surgery (residual tumor or lymph node detected within 6 months of initial surgery). A total of 1,106 patients were included (Figure 1).

### Preoperative examination and surgical procedures

Diagnostic medical sonographers with over 5 years of experience performed the high-resolution neck ultrasound to evaluate the lymph node status and thyroid nodules. Each thyroid nodule would be evaluated by the following features: shape, tumor site, nodular composition, echogenicity, margin, and echogenic foci. Cervical lymph nodes with the following characteristics were suspected of metastases: hyperechoic changes, roundness or necrosis, loss of the fatty hilum, microcalcification, or peripheral vascularity (12). FNAC was conducted to confirm the histopathologic diagnosis preoperatively for suspicious thyroid nodules and lateral lymph nodes.

Total thyroidectomy was performed if the patient had any of the following factors: tumor located in the thyroid isthmus, bilateral multifocality, tumor size  $>4.0$  cm, or  $1.0$  cm  $<$  tumor size  $\leq 4.0$  cm with risk factors for recurrence, presence of extrathyroidal extension (ETE), and suspicious LLNM preoperatively (1). Otherwise, patients underwent lobectomy plus isthmectomy only. According to the Chinese guidelines for diagnosis and treatment of differentiated thyroids, central neck dissection (CND) was routinely performed for all PTC patients. On the premise of effectively protecting the parathyroid gland and recurrent laryngeal nerve (RLN), ipsilateral CND was performed for ipsilateral lesion; bilateral CND was performed for isthmus lesion and bilateral lesions. For patients with clinically suspicious



unilateral LLNM confirmed by FNAC, total thyroidectomy plus CND and ipsilateral therapeutic lateral neck dissection (LND) was performed. CND included the removal of prelaryngeal, pretracheal, and paratracheal lymph nodes. LND referred to the removal of the lateral lymph nodes, including level II to V, while preserving the spinal accessory nerve, internal jugular vein, or sternocleidomastoid muscle. The status of cervical lymph nodes was confirmed by a final histological examination.

### Definitions

Body mass index (BMI) ( $\text{kg}/\text{m}^2$ ) was defined as weight (kg) divided by height (m) squared. According to the World Health Organization-BMI standard, enrolled PTC patients were divided into normal ( $\text{BMI} < 25 \text{ kg}/\text{m}^2$ ), overweight ( $25 \leq \text{BMI} < 30 \text{ kg}/\text{m}^2$ ), and obese ( $\text{BMI} \geq 30 \text{ kg}/\text{m}^2$ ) group. The diagnosis of chronic lymphocytic thyroiditis (CLT) included any of the following: (i) elevated antibodies to thyroid peroxidase level ( $>50 \text{ IU}/\text{ml}$ ), and/or (ii) findings of diffuse heterogeneity on ultrasound, and/or (iii) diffuse lymphocytic thyroiditis on histopathology (13). ETE was defined as a tumor with capsular abutment of more than 25% of its perimeter on ultrasound (14). The tumor size and location were determined by the largest predominant primary lesion for multifocal lesions. For patients who did not undergo LND, the number of metastatic lymph nodes in lateral compartment was clinically considered to be zero. The central lymph node ratio (CLNR) was calculated as the ratio of metastatic lymph nodes in the central compartment out of the number of dissected lymph nodes in the central compartment.

### Postoperative complications

All patients underwent fiber laryngoscope before and after surgery to assess the mobility of vocal cords. Transient RLN

injury was regarded as decreased or absence of vocal cord mobility resolving within 6 months of surgery. Impaired vocal cord mobility for more than 6 months after surgery was considered permanent RLN injury. Serum calcium and phosphorus concentrations were measured in all patients after surgery. Transient hypocalcemia was defined as an ionized calcium level  $<2.10 \text{ mmol}/\text{L}$  during hospitalization and the calcium level returned to normal within 6 months. Permanent hypoparathyroidism was diagnosed in patients still requiring calcium supplementation more than 6 months after surgery.

### Statistical analysis

All statistical analysis was performed by using SPSS Version 25.0 software (Chicago, IL, USA), and R software Version 3.5.3 (The R Foundation for Statistical Computing). Pearson Chi-square test or Fisher’s exact test was used for categorical data, and independent *t*-test was used to compare continuous variables. Differences with *p* values less than 0.05 were regarded as significant. Binary logistic regression analysis was conducted to assess independent associations of LLNM with factors found to be statistically significant by univariate analysis. We constructed the risk prediction model Nomogram in R software according to independent factors screened through the logistic regression model. The discriminative power of the nomogram for predicting LLNM was determined using the area under the receiver operating characteristic (ROC) curve, also known as the concordance index, with values ranging from 0.50 to 1.00. To address model overfitting and obtain a relatively unbiased evaluation, we used 1,000 random bootstrap resamples. The calibration of diagnostic nomogram was further evaluated by the calibration chart, which plotted the predicted probability of the nomogram against the observed probability.

## Results

### Baseline clinicopathological characteristics of PTC patients with different sizes

In our study, 151 PTMC patients and 271 macro-PTC patients were suspected of LLNM by preoperative ultrasound and underwent FNAC for these suspicious lymph nodes. Eighty-seven PTMC patients and 162 macro-PTC patients had high suspicion of LLNM and underwent LND. Postoperative pathology revealed LLNM in 80 PTMC patients and 155 macro-PTC patients (Figure 1).

Table 1 shows the clinicopathological characteristics of the enrolled 1,106 PTC patients in this study. The 1,106 patients consisted of 800 women (72.3%) and 306 men (27.7%). There were 196 patients (17.7%) aged 55 years or older. CLT was present in 370 patients (33.5%) and absent in the remaining 736 patients (66.5%). The number of patients with one, two, and more than two foci in the thyroid gland were 712 (64.4%), 268 (24.2%), and 126 (11.4%), respectively. Tumors located in the upper portion of the thyroid gland were detected in 553 patients (50.0%), and tumors located in the middle/lower lobe of thyroid were detected in 553 patients (50.0%). In this study, tumors located in the isthmus were included in the group with tumors located in the middle pole. There were 74 cases of isthmus tumors, including 44 cases in the PTMC group and 30 cases in the macro-PTC group.

We divided patients into the PTMC group and the macro-PTC group according to the largest diameter of tumor. There were 634 patients in the PTMC group and 472 patients in the macro-PTC group. There was a statistically significant difference between two groups in terms of sex, BMI, number of foci, echogenicity, shape, margin, echogenic foci, CLNM, and LLNM (all  $p < 0.05$ ). The number of removed lymph nodes in the central compartment of macro-PTC patients was more than PTMC patients ( $8.1 \pm 5.1$  vs.  $7.5 \pm 4.6$ ,  $p = 0.031$ ). However, there was no statistical difference in the number of removed lymph nodes in the lateral compartment between the two groups ( $p = 0.881$ ). The number of metastatic lymph nodes in the central compartment and lateral compartment was fewer in the PTMC group when compared with the macro-PTC group ( $1.2 \pm 2.2$  vs.  $3.1 \pm 3.3$ ;  $4.3 \pm 3.1$  vs.  $5.6 \pm 4.5$ , respectively, all  $p < 0.05$ ). Figure 2 showed the boxplot of the number of removed and metastatic lymph nodes in the lateral compartment. As for other clinicopathological factors, no significant differences were observed.

Of 634 PTMC patients, 12 patients developed RLN injury (including 7 patients with transient RLN injury and 5 patients with permanent RLN injury). As for 472 macro-PTC patients, 7 patients developed RLN injury (including 4 patients with transient RLN injury and 3 patients with permanent RLN injury). Hypocalcemia occurred in 25 PTMC patients, of whom 19 cases were temporary and 6 cases were permanent. As for macro-PTC

patients, 11 cases developed hypocalcemia, including 7 temporary cases and 4 permanent cases. There was no statistical difference in the incidence of RLN injury and hypocalcemia between PTMC and macro-PTC patients.

### Prevalence and distribution of metastatic lymph nodes in the lateral neck

As shown in Figure 1, among 634 PTMC patients, 87 patients had suspected metastatic lymph nodes in the lateral compartment, and of 472 macro-PTC patients, 162 patients had suspected metastatic lymph nodes in the lateral compartment. A total of 249 PTC patients underwent the total thyroidectomy plus CND and ipsilateral therapeutic LND. Postoperative pathology showed that 80 PTMC patients developed LLNM, and 155 macro-PTC patients developed LLNM.

Table 2 shows the distribution of metastatic lymph nodes in the lateral compartment of PTMC and macro-PTC patients. Simultaneous lymph node metastasis in level II, III, and IV was the most common in PTMC and macro-PTC patients, which is up to 21.8% and 24.7%, respectively. For the rate of metastatic lymph nodes in the lateral compartment divided by region, level IV metastasis was the most common in PTMC and macro-PTC patients (75.9% for PTMC, 79.6% for macro-PTC), followed by level III metastasis (69.0% for PTMC, 73.5% for macro-PTC); level V metastasis was the least common (20.7% for PTMC, 23.5% for macro-PTC).

### Risk factors for LLNM in PTMC patients

We first analyzed the risk factors for LLNM in PTMC patients. As shown in Table 3, LLNM presented the significant association with sex, tumor size, the number of foci, location, shape, echogenic foci, CLNM, and CLNR in the univariate analysis (all  $p < 0.05$ ).

Multivariate logistic regression modeling was further conducted to screen for significant variables associated with LLNM in PTMC patients. Multivariate analysis showed that sex (OR: 2.011, 95% CI: 1.162–3.482,  $p = 0.013$ ), two tumor foci (OR: 2.050, 95% CI: 1.106–3.801,  $p = 0.023$ ), three or more tumor foci (OR: 3.581, 95% CI: 1.667–7.693,  $p = 0.001$ ), tumor located in the upper pole (OR: 2.623, 95% CI: 1.519–4.530,  $p = 0.001$ ), tumor with aspect ratio (A/T)  $> 1$  (OR: 2.455, 95% CI: 1.424–4.235,  $p = 0.001$ ), and presence of CLNM (OR: 7.390, 95% CI: 3.903–13.990,  $p < 0.001$ ) remained independent predictors for LLNM in PTMC patients.

### Risk factors for LLNM in macro-PTC patients

The relationships between predictive factors and LLNM in macro-PTC patients are presented in Table 4. Sex, BMI, CLT,

TABLE 1 Clinicopathological features of PTC patients with different tumor sizes.

Characteristics	Total	PTMC	Macro-PTC	p-value
	1,106	634	472	
Sex				
Male	306 (27.7%)	150 (23.7%)	156 (33.1%)	
Female	800 (72.3%)	484 (76.3%)	316 (66.9%)	0.001
Age (years)				
≥55	196 (17.7%)	113 (17.8%)	83 (17.6%)	
<55	910 (82.3%)	521 (82.2%)	389 (82.4%)	0.918
BMI (kg/m <sup>2</sup> )				
Normal	123 (11.1%)	80 (12.6%)	43 (9.1%)	
Overweight	592 (53.5%)	350 (55.2%)	242 (51.3%)	
Obesity	391 (35.4%)	204 (32.2%)	187 (39.6%)	0.018
Diabetes				
Absence	964 (87.2%)	542 (85.5%)	422 (89.4%)	
Presence	142 (12.8%)	92 (14.5%)	50 (10.6%)	0.054
CLT				
Absence	736 (66.5%)	411 (64.8%)	325 (68.9%)	
Presence	370 (33.5%)	223 (35.2%)	147 (31.1%)	0.160
BRAF V600E mutation				
Negative	142 (12.8%)	73 (11.5%)	69 (14.6%)	
Positive	964 (87.2%)	561 (88.5%)	403 (85.4%)	0.127
The number of foci				
1	712 (64.4%)	435 (68.6%)	277 (58.7%)	
2	268 (24.2%)	144 (22.7%)	124 (26.3%)	
3 or more	126 (11.4%)	55 (8.7%)	71 (15.0%)	<0.001
Multifocality				
Solitary	712 (64.4%)	435 (68.6%)	277 (58.7%)	
Ipsilateral multifocality	150 (13.6%)	87 (13.7%)	63 (13.3%)	
Bilateral multifocality	244 (22.1%)	112 (17.7%)	132 (28.0%)	<0.001
Location				
Upper	553 (50.0%)	301 (47.5%)	252 (53.4%)	
Middle/Lower Upper	553 (50.0%)	333 (52.5%)	220 (46.6%)	0.052
Nodular composition				
Mixed cystic and solid	10 (0.9%)	4 (0.6%)	6 (1.3%)	
Solid	1,096 (99.1%)	630 (99.4%)	466 (98.7%)	0.269
Echogenicity				
Hyperechoic or isoechoic	33 (3.0%)	12 (1.9%)	21 (4.4%)	
Hypoechoic	1,057 (95.6%)	616 (97.2%)	441 (93.4%)	
Very hypoechoic	16 (1.4%)	6 (0.9%)	10 (2.1%)	0.012
Shape				
A/T ≤1	710 (64.2%)	455 (71.8%)	255 (54.0%)	
A/T >1	396 (35.8%)	179 (28.2%)	217 (46.0%)	<0.001
Margin				
Smooth	646 (58.4%)	435 (68.6%)	211 (44.7%)	
Lobulated or irregular	289 (26.1%)	131 (20.7%)	158 (33.5%)	
ETE	171 (15.5%)	68 (10.7%)	103 (21.8%)	<0.001
Echogenic foci				
None or large comet-tail artifacts	319 (28.8%)	230 (36.3%)	89 (18.9%)	
Macrocalcifications	67 (6.1%)	36 (5.7%)	31 (6.6%)	

(Continued)

TABLE 1 Continued

Characteristics	Total	PTMC	Macro-PTC	p-value
Peripheral calcifications	8 (0.7%)	0 (0.0%)	8 (1.7%)	
Punctate echogenic foci	712 (64.4%)	368 (58.0%)	344 (72.9%)	<0.001
CLNM				
Absence	493 (44.6%)	370 (58.4%)	123 (26.1%)	
Presence	613 (55.4%)	264 (41.6%)	349 (73.9%)	<0.001
LLNM				
Absence	871 (78.8%)	554 (87.4%)	317 (67.2%)	
Presence	235 (21.2%)	80 (12.6%)	155 (32.8%)	<0.001
No. of removed LNs in CC	7.7 ± 4.9 (2–35)	7.5 ± 4.6 (2–25)	8.1 ± 5.1 (2–35)	0.031
No. of metastatic LNs in CC	2.0 ± 2.9 (0–18)	1.2 ± 2.2 (0–15)	3.1 ± 3.3 (0–18)	<0.001
No. of removed LNs in LC*	28.0 ± 10.3 (10–69)	28.1 ± 10.7 (11–57)	27.9 ± 10.2 (10–69)	0.881
No. of metastatic LNs in LC*	5.2 ± 4.1 (0–22)	4.3 ± 3.1 (0–13)	5.6 ± 4.5 (0–22)	0.006

PTC, papillary thyroid carcinoma; PTMC, papillary thyroid microcarcinoma; BMI, body mass index; CLT, chronic lymphocytic thyroiditis; A/T, aspect ratio (height divided by width on transverse views); ETE, extrathyroidal extension; LN, lymph node; CLNM, central lymph node metastasis; LLNM, lateral lymph node metastasis; CC, central compartment; LC, lateral compartment.

The categorical variables were expressed as n (%).

The continuous variables were expressed as the mean ± standard deviations (range).

\*The number of metastatic and removed lymph nodes in lateral compartment was clinically considered to be zero for patients who did not undergo lateral neck dissection.

tumor size, the number of foci, location, margin, CLNM, and CLNR were all correlated with LLNM by univariate analysis (all  $p < 0.05$ ).

Multivariate analysis was performed to determine whether these parameters were independently correlated LLNM in macro-PTC. Absence of CLT (OR: 1.807, 95% CI: 1.080–3.024,  $p = 0.024$ ), three or more tumor foci (OR: 2.588, 95% CI: 1.383–4.841,  $p = 0.003$ ), tumor located in the upper pole (OR: 2.139, 95% CI: 1.360–3.365,  $p = 0.001$ ), lobulated or irregular tumor (OR: 2.378, 95% CI: 1.410–4.009,  $p = 0.001$ ), presence of ETE (OR: 3.691, 95% CI: 2.081–6.549,  $p < 0.001$ ), presence of CLNM (OR: 2.621, 95% CI: 1.273–5.398,  $p = 0.009$ ), and CLNR (OR:

2.359, 95% CI: 1.439–3.866,  $p = 0.001$ ) remained independently predictive of LLNM in macro-PTC patients.

### Development of nomograms for predicting LLNM in PTMC and macro-PTC patients

To better predict the individual probability of LLNM, we constructed a series of diagnostic nomograms using independent predictors selected by binary logistic regression analysis to generate a combined measurement (Figure 3). Because none of the leading

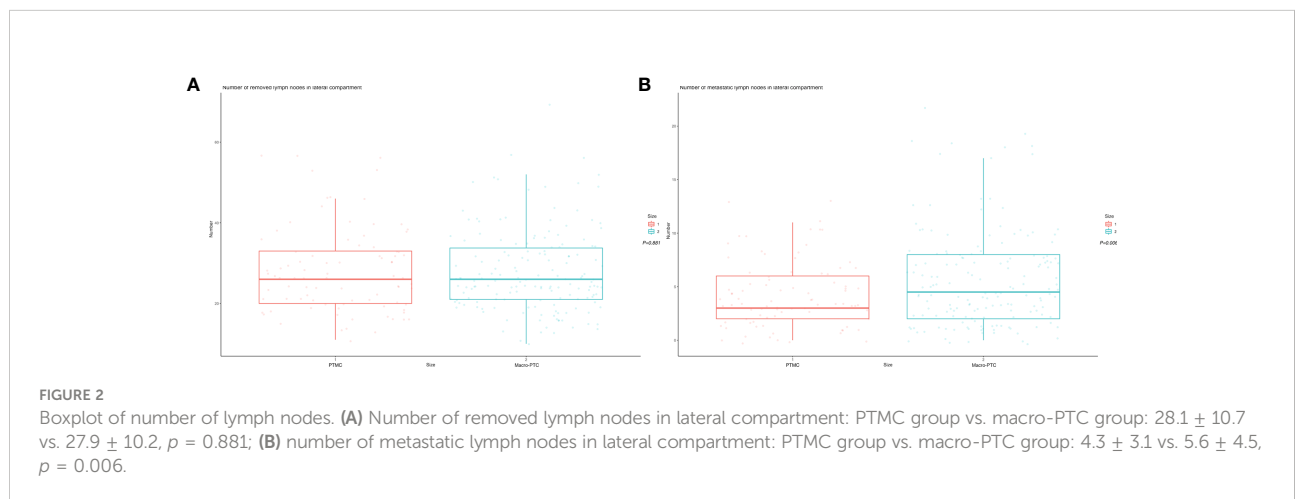




TABLE 2 Distribution of metastatic LNs in the LC of 249 PTC patients who underwent LND.

Distribution of LLNM	PTMC87	Macro-PTC162	p-value
Without LLNM	7 (8.0%)	7 (4.3%)	0.353
Single level			
II	1 (1.1%)	0 (0.0%)	0.146
III	7 (8.0%)	15 (9.3%)	0.748
IV	11 (12.6%)	21 (13.0%)	0.943
V	0 (0.0%)	1 (0.6%)	0.353
Two levels			
II+III	3 (3.4%)	5 (3.1%)	0.878
II+IV	6 (6.9%)	5 (3.1%)	0.284
II+V	0 (0.0%)	1 (0.6%)	0.353
III+IV	15 (17.2%)	31 (19.1%)	0.713
III+V	0 (0.0%)	3 (1.9%)	0.504
IV+V	2 (2.3%)	7 (4.3%)	0.646
Three levels			
II+III+IV	19 (21.8%)	40 (24.7%)	0.614
II+III+V	3 (3.4%)	1 (0.6%)	0.099
II+IV+V	0 (0.0%)	1 (0.6%)	0.353
III+IV+V	9 (10.3%)	7 (4.3%)	0.065
Four levels			
II+III+IV+V	4 (4.6%)	17 (10.5%)	0.110
Summary of LLNM			
II	36 (41.4%)	70 (43.2%)	0.781
III	60 (69.0%)	119 (73.5%)	0.452
IV	66 (75.9%)	129 (79.6%)	0.492
V	18 (20.7%)	38 (23.5%)	0.618

LN, lymph node; LC, lateral compartment; LLNM, lateral lymph node metastasis; PTC, papillary thyroid carcinoma; PTMC, papillary thyroid microcarcinoma.

guidelines recommend prophylactic LND, we divided models of LLNM into the preoperative model and the postoperative model for PTMC and macro-PTC patients. Preoperative models (Figures 3A, C) were constructed based on clinical factors, and postoperative models (Figures 3B, D) were constructed based on clinicopathological factors. Detailed factors are listed in the Tables 3 and 4. According to the regression coefficient of LLNM, each variable was proportionally distributed as the point in the range of 0 to 100 in the nomograms. Detailed scores are listed in the Tables 3 and 4. The corresponding probability of LLNM in each person can be determined by adding the total score and positioning it on the scale of the total score.

## Internal validation of the prediction nomograms

The ROC analysis for nomograms of LLNM was then performed. Area under curves (AUCs) for the preoperative model and postoperative model for predicting LLNM in PTMC patients were 0.754 and 0.834, respectively (Figures 4A, B). Moreover, for predicting LLNM in macro-PTC patients, AUCs for the

preoperative model and postoperative model were 0.753 and 0.797, respectively (Figures 4C, D).

Furthermore, the similar bootstrap resampling procedure was used to conduct the internal calibration plot for established models. The calibration curve of nomograms presented good agreement between the predicted and observed probability of LLNM. After the adjustment for optimism, corrected risks also showed excellent agreement with observed metastasis risk, and only minor discrepancies were observed (Figure 5).

Moreover, we developed the nomogram for LLNM in all PTC patients and compared this nomogram with nomograms for LLNM in PTMC and macro-PTC, respectively (Supplementary Figures 1–3). We found that the AUCs of nomograms for LLNM in PTMC and macro-PTC were higher than that in all PTC patients. It shows that we are correct to develop the nomogram of LLNM separately for PTMC and macro-PTC.

## Discussion

LLNM, which is defined as level II–V cervical lymph node involvement, suggests a poor prognosis among PTC patients (7).

TABLE 3 Univariate analysis and multivariate analysis of factors associated with LLNM in patients with PTMC.

Characteristics	LLNM		Multivariate analysis				
	Presence (n = 80)	Absence (n = 554)	p-value	Adjusted OR (95% CI)	p-value	Score <sup>1</sup>	Score <sup>2</sup>
Sex							
Female	33 (41.3%)	117 (21.1%)		Ref		0	0
Male	47 (58.8%)	437 (78.9%)	<0.001	2.011 (1.162–3.482)	0.013	60	35
Age (years)							
≥55	11 (13.8%)	102 (18.4%)					
<55	69 (86.3%)	452 (81.6%)	0.308				
BMI (kg/m <sup>2</sup> )							
Normal	4 (5.0%)	76 (13.7%)					
Overweight	50 (62.5%)	300 (54.2%)					
Obesity	26 (32.5%)	178 (32.1%)	0.078				
Diabetes							
Absence	72 (90.0%)	470 (84.8%)					
Presence	8 (10.0%)	84 (15.2%)	0.220				
CLT							
Absence	56 (70.0%)	355 (64.1%)					
Presence	24 (30.0%)	199 (35.9%)	0.300				
BRAF V600E mutation							
Negative	6 (7.5%)	67 (12.1%)					
Positive	74 (92.5%)	487 (87.9%)	0.229				
Maximum tumor size							
≤0.5 cm	7 (8.8%)	119 (21.5%)		Ref			
>0.5 to ≤1 cm	73 (91.3%)	435 (78.5%)	0.008	1.394 (0.575–3.375)	0.462		
The number of foci							
1	41 (51.2%)	394 (71.1%)		Ref		0	0
2	23 (28.7%)	121 (21.8%)		2.050 (1.106–3.801)	0.023	56	36
3 or more	16 (20.0%)	39 (7.0%)	<0.001	3.581 (1.667–7.693)	0.001	100	64
Bilateral tumors							
Absence	64 (80.0%)	458 (82.7%)					
Presence	16 (20.0%)	96 (17.3%)	0.558				
Location							
Middle/Lower	27 (33.8%)	306 (55.2%)		ref		0	0
Upper	53 (66.3%)	248 (44.8%)	<0.001	2.623 (1.519–4.530)	0.001	61	48
Nodular composition							
Mixed cystic and solid	0 (0.0%)	4 (0.7%)					
Solid	80 (100.0%)	550 (99.3%)	0.298				
Echogenicity							
Hyperechoic or isoechoic	0 (0.0%)	12 (2.2%)					
Hypoechoic	78 (97.5%)	538 (97.1%)					
Very hypoechoic	2 (2.5%)	4 (0.7%)	0.084				
Shape							
A/T ≤1	42 (52.5%)	413 (74.5%)		Ref		0	0
A/T >1	38 (47.5%)	141 (25.5%)	<0.001	2.455 (1.424–4.235)	0.001	69	45
Margin							
Smooth	52 (65.0%)	383 (69.1%)					
Lobulated or irregular	21 (26.3%)	110 (19.9%)					
ETE	7 (8.8%)	61 (11.0%)	0.389				
Echogenic foci							

(Continued)



TABLE 3 Continued

Characteristics	LLNM		p-value	Multivariate analysis		Score <sup>1</sup>	Score <sup>2</sup>
	Presence (n = 80)	Absence (n = 554)		Adjusted OR (95% CI)	p-value		
None/large comet-tail artifacts	15 (18.8%)	215 (38.8%)		Ref			
Macrocalcifications	10 (12.5%)	26 (4.7%)		2.378 (0.764–7.403)	0.135		
Peripheral calcifications	0 (0.0%)	0 (0.0%)		–	–		
Punctate echogenic foci	55 (68.8%)	313 (56.5%)	<0.001	1.349 (0.691–2.634)	0.381		
CLNM							
Absence	13 (16.3%)	357 (64.4%)		Ref			0
Presence	67 (83.8%)	197 (35.6%)	<0.001	7.390 (3.903–13.990)	<0.001		100
CLNR							
<0.5	46 (57.5%)	483 (87.2%)		Ref			
≥0.5	34 (42.5%)	71 (12.8%)	<0.001	1.586 (0.869–2.896)	0.133		
Largest size of lymph node in LC							
≤2 cm	63 (78.8%)	453 (81.8%)					
>2 cm	17 (21.3%)	101 (18.2%)	0.517				

LLNM, lateral lymph node metastasis; PTMC, papillary thyroid microcarcinoma; BMI, body mass index; CLT, chronic lymphocytic thyroiditis; A/T, aspect ratio (height divided by width on transverse views); ETE, extrathyroidal extension; CLNM, central lymph node metastasis; CLNR, central lymph node ratio; LC, lateral compartment; OR, odds ratio; CI, confidence interval. The categorical variables were expressed as n (%).

Score<sup>1</sup> represents the preoperative score of the preoperative model.

Score<sup>2</sup> represents the postoperative score of the postoperative model.

TABLE 4 Univariate analysis and multivariate analysis of factors associated with LLNM in patients with macro-PTC.

Characteristics	LLNM		p-value	Multivariate analysis		Score <sup>1</sup>	Score <sup>2</sup>
	Presence (n = 155)	Absence (n = 317)		Adjusted OR (95% CI)	p-value		
Sex							
Female	91 (58.7%)	225 (71.0%)		Ref			
Male	64 (41.3%)	92 (29.0%)	0.008	1.046 (0.646–1.692)	0.855		
Age (years)							
≥55	25 (16.1%)	58 (18.3%)					
<55	130 (83.9%)	259 (81.7%)	0.561				
BMI (kg/m <sup>2</sup> )							
Normal	6 (3.9%)	37 (11.7%)		Ref			
Overweight	81 (52.3%)	161 (50.8%)		1.902 (0.703–5.147)	0.205		
Obesity	68 (43.9%)	119 (37.5%)	0.018	2.465 (0.902–6.738)	0.079		
Diabetes							
Absence	138 (89.0%)	284 (89.6%)					
Presence	17 (11.0%)	33 (10.4%)	0.853				
CLT							
Presence	31 (20.0%)	116 (36.6%)		Ref		0	0
Absence	124 (80.0%)	201 (63.4%)	<0.001	1.807 (1.080–3.024)	0.024	48	45
BRAF V600E mutation							
Negative	23 (14.8%)	46 (14.5%)					
Positive	132 (85.2%)	271 (85.5%)	0.925				
Maximum tumor size							
>1 to ≤2 cm	77 (49.7%)	199 (62.8%)		Ref			
>2 to ≤4 cm	67 (43.2%)	98 (30.9%)		1.402 (0.871–2.256)	0.165		
≥4 cm	11 (7.1%)	20 (6.3%)	0.022	1.284 (0.514–3.206)	0.593		

(Continued)

TABLE 4 Continued

Characteristics	LLNM		Multivariate analysis				
	Presence (n = 155)	Absence (n = 317)	p-value	Adjusted OR (95% CI)	p-value	Score <sup>1</sup>	Score <sup>2</sup>
The number of foci							
1	76 (49.0%)	201 (63.4%)		Ref		0	0
2	41 (26.5%)	83 (26.2%)		1.027 (0.614–1.720)	0.918	7	2
3 or more	38 (24.5%)	33 (10.4%)	<0.001	2.588 (1.383–4.841)	0.003	70	73
Bilateral tumors							
Absence	107 (69.0%)	233 (73.5%)					
Presence	48 (31.0%)	84 (26.5%)	0.310				
Location							
Middle/Lower	49 (31.6%)	171 (53.9%)		Ref		0	0
Upper	106 (68.4%)	146 (46.1%)	<0.001	2.139 (1.360–3.365)	0.001	56	58
Nodular composition							
Mixed cystic and solid	2 (1.3%)	4 (1.3%)					
Solid	153 (98.7%)	313 (98.7%)	0.979				
Echogenicity							
Hyperechoic or isoechoic	4 (2.6%)	17 (5.4%)					
Hypoechoic	147 (94.8%)	294 (92.7%)					
Very hypoechoic	4 (2.6%)	6 (1.9%)	0.322				
Shape							
A/T ≤1	90 (58.1%)	165 (52.1%)					
A/T >1	65 (41.9%)	152 (47.9%)	0.218				
Margin							
Smooth	38 (24.5%)	173 (54.6%)		Ref		0	0
Lobulated or irregular	63 (40.6%)	95 (30.0%)		2.378 (1.410–4.009)	0.001	76	66
ETE	54 (34.8%)	49 (15.5%)	<0.001	3.691 (2.081–6.549)	<0.001	100	100
Echogenic foci							
None/large comet-tail artifacts	21 (13.5%)	68 (21.5%)					
Macrocalcifications	14 (9.0%)	17 (5.4%)					
Peripheral calcifications	2 (1.3%)	6 (1.9%)					
Punctate echogenic foci	118 (76.1%)	226 (71.3%)	0.100				
CLNM							
Absence	13 (8.4%)	110 (34.7%)		Ref			0
Presence	142 (91.6%)	207 (65.3%)	<0.001	2.621 (1.273–5.398)	0.009		74
CLNR							
<0.5	52 (33.5%)	219 (69.1%)		Ref			0
≥0.5	103 (66.5%)	98 (30.9%)	<0.001	2.359 (1.439–3.866)	0.001		66
Largest size of lymph node in LC							
≤2 cm	127 (81.9%)	270 (85.2%)					
>2 cm	28 (18.1%)	47 (14.8%)	0.366				

LLNM, lateral lymph node metastasis; PTC, papillary thyroid carcinoma; BMI, body mass index; CLT, chronic lymphocytic thyroiditis; A/T, aspect ratio (height divided by width on transverse views); ETE, extrathyroidal extension; CLNM, central lymph node metastasis; CLNR, central lymph node ratio; LC, lateral compartment; OR, odds ratio; CI, confidence interval. The categorical variables were expressed as n (%).

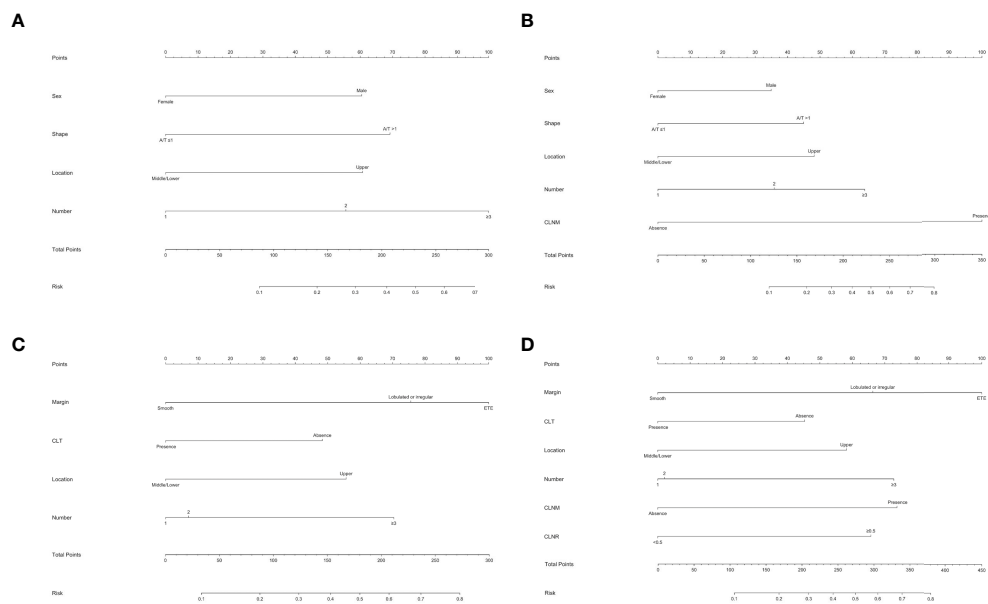
Score<sup>1</sup> represents the preoperative score of the preoperative model.

Score<sup>2</sup> represents the postoperative score of the postoperative model.

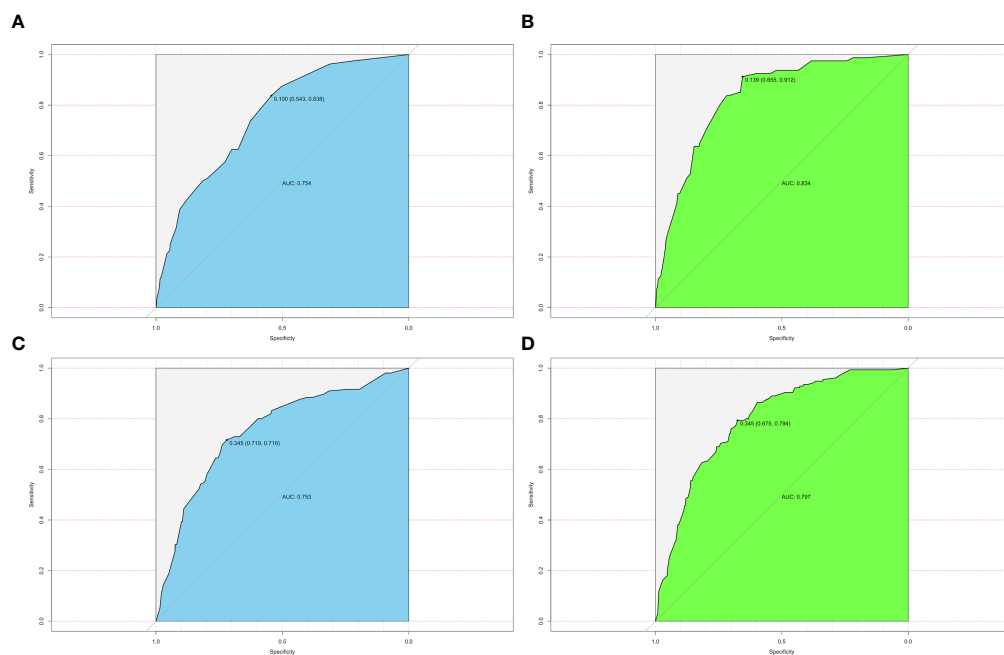
LND is only recommended for PTC patients with positive FNAC-proven LLNM according to the ATA guidelines (1). Notably, ultrasound-guided FNAC is not available in some institutions, and the false-negative rate of FNAC can be as

high as 16.7% (15). Accurate evaluation factor for LLNM is necessary for distinguishing high-risk PTC patients.

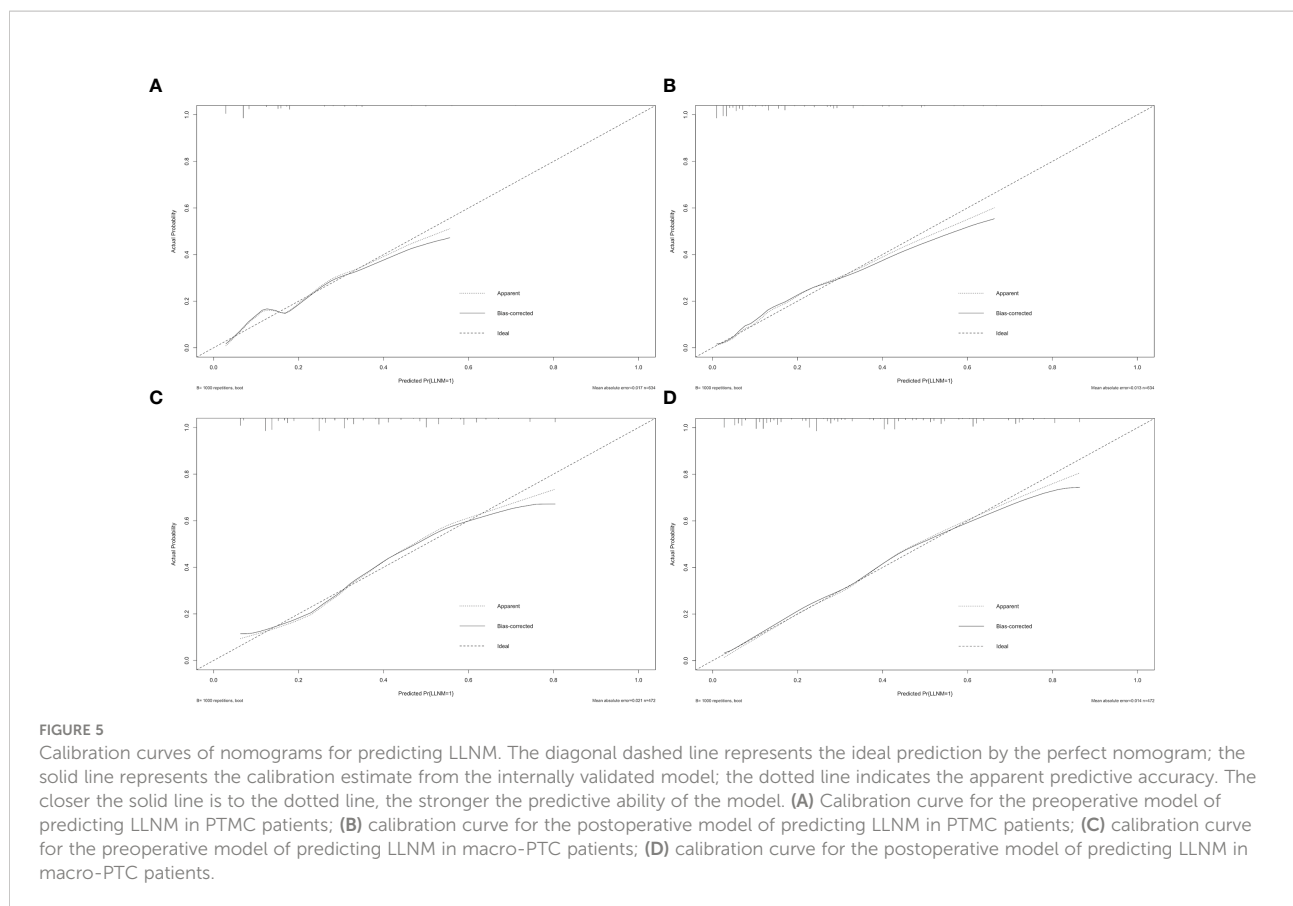
LNM usually occurs in a stepwise and continuous manner. LLNM usually occurs after CLNM, which explains the higher



**FIGURE 3** Nomogram for predicting LNM in patients with PTC. **(A)** Preoperative nomogram for predicting LLNM in PTMC patients; **(B)** postoperative nomogram for predicting LLNM in PTMC patients; **(C)** preoperative nomogram for predicting LLNM in macro-PTC patients; **(D)** postoperative nomogram for predicting LLNM in macro-PTC patients.



**FIGURE 4** ROC curves for different models. **(A)** AUC was 0.754 for the preoperative model of predicting LLNM in PTMC patients; **(B)** AUC was 0.834 for the postoperative model of predicting LLNM in PTMC patients; **(C)** AUC was 0.753 for the preoperative model of predicting LLNM in macro-PTC patients; **(D)** AUC was 0.797 for the postoperative model of predicting LLNM in macro-PTC patients.



incidence of CLNM than LLNM. However, there are some special cases. For example, 15 (2.4%) and 17 (3.6%) patients in the PTMC and macro-PTC groups developed skip metastasis (negative CLNM with positive LLNM). Patients often had multi-level metastasis, and simultaneous metastasis in levels II, III, and IV was the most common in both PTMC and macro-PTC. Within the lateral cervical lymph node chain, level IV metastasis was consistently the most common in both PTMC and macro-PTC, followed by level III, level II, and level V. These findings were consistent with a previous study (16).

In our study, we found that male gender, multifocality, upper location of tumor, tumor with A/T >1, and presence of CLNM were risk factors for LLNM in PTMC patients. These findings were consistent with published articles. Consistent with a previous study including 1,066 patients with PTMC, our results showed that an increase in the number of tumors led to an increased risk of LLNM (17). Multifocality leading to increased aggressiveness may be due to the fact that multifocal clonal origins result from intraglandular spread of a single primary tumor (18). Liu et al. (19) also found upper portion location was the risk factor for LLNM in PTMC. The lymphatic drainage system of the upper pole differs from that of other parts

of the thyroid lobe. Tumors in the upper lobe can spread directly to the ipsilateral lateral chamber through the lymphatic vessels along the superior venous vessels, which lead to the higher rate of LLNM in upper pole location. In addition, in rare cases, some tumors can even bypass the central compartment and directly metastasize to the lateral compartment through these channels, which is known as skip metastasis (20, 21). The diagnosis of PTMC has also improved with the development of ultrasound. However, studies linking LLNM to ultrasound features of PTC are limited. We found a significant difference in the probability of developing LLNM in PTMC with A/T >1. Other ultrasound features, such as nodular composition, echogenicity, and echogenic foci, were not associated with LLNM in PTMC patients. In several studies, CLNM was shown to be an important factor for LLNM in PTMC (22, 23), and our study also confirmed this correlation.

Then, we compared the clinicopathological characteristics predictive of LLNM in patients with macro-PTC. Multivariate analyses indicated that absence of CLT, three or more tumor foci, upper location of tumor, lobulated or irregular tumor, presence of ETE, presence of CLNM, and CLNR were all independent predictors for LLNM in macro-PTC patients.

These were consistent with the known high-risk features of macro-PTC. In macro-PTC, risk factors for LLNM such as multifocality, location, and CLNM are also risk factors for LLNM in PTMC. CLT has been considered a risk factor for the development of thyroid malignancy. However, data on the effect of CLT on cervical LNM in PTC were inconsistent. Some studies showed that PTC patients coexistent with CLT had a higher incidence of LNM (24), while others showed the opposite conclusion (25, 26). In our study, the most significant result is the association of CLT with the less frequent LLNM. This result is in agreement with the meta-analysis of Lee et al. (27), that the lymphocytic infiltration counteracts tumor progression. Therefore, we infer that concurrent CLT is a protective factor for macro-PTC patients. As for macro-PTC, ultrasound features, such as lobulated or irregular tumor and presence of ETE, were associated with LLNM. Ultrasound showed high sensitivity (80%) for predicting minimal ETE in PTC patients (28). In this study, a tumor was classified as suspicious for ETE when there is a contact of >25% with the adjacent capsule of PTC. Metastatic ratio could be used to quantitatively evaluate the positive central lymph nodes. We analyzed the metastatic ratio of central lymph nodes and set the cutoff metastatic ratio as 50% according to previous studies (29, 30). We found that CLNR was significantly associated with LLNM in macro-PTC.

Considering none of the leading guidelines to date recommend prophylactic LND, we incorporated all the above factors into nomograms to create possibilities for detecting high-risk patients with occult LLNM preoperatively and providing an individualized plan for postoperative management of PTC patients. Although there was no statistical difference in the incidence of RLN injury and hypocalcemia in PTMC and macro-PTC patients, the incidence of CLNM and LLNM in macro-PTC was much higher than that of PTMC (73.9% vs. 41.6%; 32.8% vs. 12.6%, respectively), indicating that the diameter of the tumor has an impact on the rate of LNM, and separate predictive systems should be used for PTMC and macro-PTC patients for more accurate clinical assessment of lateral lymph node status. We separately established two predictive nomograms to predict LLNM in PTMC patients before and after operation. In the same way, we built predictive nomograms to predict LLNM in macro-PTC patients. All the above nomograms showed excellent precision. In addition, compared with the nomogram for LLNM in all PTC patients, nomograms for LLNM in PTMC and macro-PTC all showed higher AUCs. The largest contributors to nomogram scores differed between PTMC and macro-PTC. The number of foci and CLNM were the largest contributors for the preoperative and postoperative model in PTMC, respectively. As for macro-PTC, the margin was the largest contributor to both preoperative and postoperative models. These findings suggest that preoperative attention should be paid to the number of tumors for PTMC patients, and the preoperative tumor margin status is extremely important for macro-PTC. Experienced

sonographers should perform detailed preoperative examinations to detect more suspected lesions in PTMC patients and accurately assess the margin of macro-PTC. Moreover, for candidates of active surveillance of PTMC, we can provide these patients more information to help them decide whether to participate in active surveillance based on the preoperative nomogram. Combined with other risk factors, high-resolution ultrasound by experienced sonographers should be performed to detect small metastatic lymph nodes in the lateral compartment early for patients with a high risk of LLNM according to preoperative nomograms. Experienced surgeons are recommended to perform detailed operations on these patients. Moreover, considering the possibility of performing LND in the future, carbon nanoparticle suspension injection should be used at the first surgery to prevent missing small metastatic lymph nodes. In addition to assisting in preoperative screening high-risk patients of LLNM, our postoperative nomograms may be helpful in detecting the risk of residual LLNM postoperatively for PTC patients who did not undergo LND. For patients with a high risk of LLNM, we can increase the frequency of follow-up and ultrasound, and decrease the cutoff of FNAC for suspicious lymph nodes in the lateral compartment. Adjuvant radioactive iodine should be carried out to detect and address possible residual carcinoma in the lateral compartment when necessary. Unless obvious clinical evidence of LLNM is present, “wait and see” is recommended for patients with a low risk of LLNM.

Despite the fact that some encouraging results were achieved, this study still had some limitations. First, although our study has a large sample size, it is a retrospective study, which is based on single-center data, and tends to have selection biases. The data were extracted from medical records; factors such as extranodal extension of metastatic lymph nodes were not available. Furthermore, different surgeons were involved in the procedure; surgeon-specific factors, such as the number of removed lymph nodes, might affect postoperative outcomes. Third, LND was not routinely performed for all PTC patients in our institution, and occult LLNM may be present. Finally, nomograms in our study were assessed only using the internal validation method. Validation of nomograms may be compromised given the diagnostic patterns in different institutions. Thus, we will conduct prospective multi-center institutional trials in subsequent studies to obtain more objective conclusions.

In conclusion, the diameter of the tumor has an impact on the rate of LLNM. We found that LLNM in PTMC patients was independently related to gender, the number of foci, location, shape, and CLNM. For macro-PTC patients, CLT, the number of foci, location, margin, CLNM, and CLNR were all independent predictors for LLNM. By using the above variables, we constructed nomograms that can not only detect high-risk patients with occult LLNM preoperatively, but also form

appropriate treatment protocols for postoperative management of PTC patients with different risks.

## Data availability statement

The raw data supporting the conclusions of this article will be made available by the authors, without undue reservation.

## Ethics statement

Written informed consent was obtained from the individual(s) for the publication of any potentially identifiable images or data included in this article. The need for informed consent was waived due to the retrospective nature of this study.

## Author contributions

J-WF and L-ZH: Writing—original draft, Software, and Data curation. S-YL: Validation, Formal analysis, and Data curation. FW: Conceptualization. JY and JH: Validation and Investigation. ZQ and YJ: Writing—review and editing, Visualization, and Supervision. All authors contributed to the article and approved the submitted version.

## Acknowledgments

Lei Qin, the English language editor, was responsible for correcting language and grammar issues.

## References

- Haugen BR, Alexander EK, Bible KC, Doherty GM, Mandel SJ, Nikiforov YE, et al. 2015 American Thyroid association management guidelines for adult patients with thyroid nodules and differentiated thyroid cancer: The American thyroid association guidelines task force on thyroid nodules and differentiated thyroid cancer. *Thyroid* (2016) 26(1):1–133. doi: 10.1089/thy.2015.0020
- Song M, Huang Z, Wang S, Huang J, Shi H, Liu Y, et al. Predictive factors of lateral lymph node metastasis in conventional papillary thyroid carcinoma. *Gland Surg* (2020) 9(4):1000–7. doi: 10.21037/gls-20-482
- Huang Y, Yin Y, Zhou W. Risk factors for central and lateral lymph node metastases in patients with papillary thyroid micro-carcinoma: Retrospective analysis on 484 cases. *Front Endocrinol (Lausanne)* (2021) 12:640565. doi: 10.3389/fendo.2021.640565
- Heng Y, Yang Z, Zhou L, Lin J, Cai W, Tao L. Risk stratification for lateral involvement in papillary thyroid carcinoma patients with central lymph node metastasis. *Endocrine* (2020) 68(2):320–8. doi: 10.1007/s12020-020-02194-8
- Wang Y, Deng C, Shu X, Yu P, Wang H, Su X, et al. Risk factors and a prediction model of lateral lymph node metastasis in CN0 papillary thyroid carcinoma patients with 1-2 central lymph node metastases. *Front Endocrinol (Lausanne)* (2021) 12:716728. doi: 10.3389/fendo.2021.716728
- Heng Y, Feng S, Yang Z, Cai W, Qiu W, Tao L. Features of lymph node metastasis and structural recurrence in papillary thyroid carcinoma located in the upper portion of the thyroid: A retrospective cohort study. *Front Endocrinol (Lausanne)* (2021) 12:793997. doi: 10.3389/fendo.2021.793997
- Sapuppo G, Palermo F, Russo M, Tavarelli M, Masucci R, Squatrito S, et al. Latero-cervical lymph node metastases (N1b) represent an additional risk factor for papillary thyroid cancer outcome. *J Endocrinol Invest* (2017) 40(12):1355–63. doi: 10.1007/s40618-017-0714-y
- Song K, Jin Y, Kim M, Moon S, Heo DB, Won HR, et al. Patterns of occult metastasis to level va and vb in clinically lateral node-positive papillary thyroid carcinoma. *Ann Surg Oncol* (2022) 29(4):2550–6. doi: 10.1245/s10434-021-11085-9
- Zhan S, Luo D, Ge W, Zhang B, Wang T. Clinicopathological predictors of occult lateral neck lymph node metastasis in papillary thyroid cancer: A meta-analysis. *Head Neck* (2019) 41(7):2441–9. doi: 10.1002/hed.25762
- Miyauchi A, Ito Y, Oda H. Insights into the management of papillary microcarcinoma of the thyroid. *Thyroid* (2018) 28(1):23–31. doi: 10.1089/thy.2017.0227
- Mao J, Zhang Q, Zhang H, Zheng K, Wang R, Wang G. Risk factors for lymph node metastasis in papillary thyroid carcinoma: A systematic review and

## Conflict of interest

The authors declare that the research was conducted in the absence of any commercial or financial relationships that could be construed as a potential conflict of interest.

## Publisher's note

All claims expressed in this article are solely those of the authors and do not necessarily represent those of their affiliated organizations, or those of the publisher, the editors and the reviewers. Any product that may be evaluated in this article, or claim that may be made by its manufacturer, is not guaranteed or endorsed by the publisher.

## Supplementary material

The Supplementary Material for this article can be found online at: <https://www.frontiersin.org/articles/10.3389/fonc.2022.944414/full#supplementary-material>

### SUPPLEMENTARY FIGURE 1

Nomogram for predicting LLNM in all PTC patients. (A) preoperative nomogram; (B) postoperative nomogram.

### SUPPLEMENTARY FIGURE 2

ROC curves for the model. (A) AUC was 0.730 for preoperative model of predicting LLNM in all PTC patients; (B) AUC was 0.758 for postoperative model of predicting LLNM in all PTC patients.

### SUPPLEMENTARY FIGURE 3

Calibration curves of nomograms for predicting LLNM. (A) calibration curve for preoperative model of predicting LLNM in all PTC patients; (B) calibration curve for postoperative model of predicting LLNM in all PTC patients.



meta-analysis. *Front Endocrinol (Lausanne)* (2020) 11:265. doi: 10.3389/fendo.2020.00265

12. Lu G, Chen L. Cervical lymph node metastases in papillary thyroid cancer: Preoperative staging with ultrasound and/or computed tomography. *Med (Baltimore)* (2022) 101(9):e28909. doi: 10.1097/MD.00000000000028909

13. Grani G, Carbotta G, Nesca A, D'Alessandri M, Vitale M, Del Sordo M, et al. A comprehensive score to diagnose hashimoto's thyroiditis: a proposal. *Endocrine* (2015) 49(2):361–5. doi: 10.1007/s12020-014-0441-5

14. Jainulabdeen T, Ramaswamy B, Devaraja K, Paruthikunnan SM, Bhandarkar AM. Preoperative staging of differentiated thyroid carcinomas: Comparison of USG and CT with intraoperative findings and histopathology. *Indian J Otolaryngol Head Neck Surg* (2019) 71(3):327–33. doi: 10.1007/s12070-019-01663-5

15. Paek SH, Kim BS, Kang KH, Kim HS. False-negative BRAF V600E mutation results on fine-needle aspiration cytology of papillary thyroid carcinoma. *World J Surg Oncol* (2017) 15(1):202. doi: 10.1186/s12957-017-1266-5

16. Liu C, Xiao C, Chen J, Li X, Feng Z, Gao Q, et al. Risk factor analysis for predicting cervical lymph node metastasis in papillary thyroid carcinoma: A study of 966 patients. *BMC Cancer* (2019) 19(1):622. doi: 10.1186/s12885-019-5835-6

17. Zhang L, Wei WJ, Ji QH, Zhu YX, Wang ZY, Wang Y, et al. Risk factors for neck nodal metastasis in papillary thyroid microcarcinoma: A study of 1066 patients. *J Clin Endocrinol Metab* (2012) 97(4):1250–7. doi: 10.1210/jc.2011-1546

18. Feng JW, Wu WX, Hu J, Hong LZ, Qin AC, Jiang Y, et al. Influence of tumor number on clinicopathologic features and outcomes of patients with papillary thyroid carcinoma. *Am J Clin Pathol* (2020) 154(6):848–58. doi: 10.1093/ajcp/aqaa102

19. Liu Z, Lei J, Liu Y, Fan Y, Wang X, Lu X. Preoperative predictors of lateral neck lymph node metastasis in papillary thyroid microcarcinoma. *Med (Baltimore)* (2017) 96(10):e6240. doi: 10.1097/MD.0000000000006240

20. Likhterov I, Reis LL, Urken ML. Central compartment management in patients with papillary thyroid cancer presenting with metastatic disease to the lateral neck: Anatomic pathways of lymphatic spread. *Head Neck* (2017) 39(5):853–9. doi: 10.1002/hed.24568

21. Feng JW, Qin AC, Ye J, Pan H, Jiang Y, Qu Z. Predictive factors for lateral lymph node metastasis and skip metastasis in papillary thyroid carcinoma. *Endocr Pathol* (2020) 31(1):67–76. doi: 10.1007/s12022-019-09599-w

22. Zhao W, Chen S, Hou X, Liao Q, Chen G, Zhao Y. Predictive factors of lateral lymph node metastasis in papillary thyroid microcarcinoma. *Pathol Oncol Res* (2019) 25(3):1245–51. doi: 10.1007/s12253-018-0511-8

23. Sheng L, Shi J, Han B, Lv B, Li L, Chen B, et al. Predicting factors for central or lateral lymph node metastasis in conventional papillary thyroid microcarcinoma. *Am J Surg* (2020) 220(2):334–40. doi: 10.1016/j.amjsurg.2019.11.032

24. Nagayama Y. Thyroid autoimmunity and thyroid cancer - the pathogenic connection: A 2018 update. *Horm Metab Res* (2018) 50(12):922–31. doi: 10.1055/a-0648-4593

25. Zhu F, Shen YB, Li FQ, Fang Y, Hu L, Wu YJ. The effects of hashimoto thyroiditis on lymph node metastases in unifocal and multifocal papillary thyroid carcinoma: A retrospective Chinese cohort study. *Med (Baltimore)* (2016) 95(6):e2674. doi: 10.1097/MD.0000000000002674

26. Ieni A, Vita R, Magliolo E, Santarpia M, Di Bari F, Benvenega S, et al. One-third of an archival series of papillary thyroid cancer (Years 2007–2015) has coexistent chronic lymphocytic thyroiditis, which is associated with a more favorable tumor-Node-Metastasis staging. *Front Endocrinol (Lausanne)* (2017) 8:337. doi: 10.3389/fendo.2017.00337

27. Lee JH, Kim Y, Choi JW, Kim YS. The association between papillary thyroid carcinoma and histologically proven hashimoto's thyroiditis: A meta-analysis. *Eur J Endocrinol* (2013) 168(3):343–9. doi: 10.1530/EJE-12-0903

28. Kim H, Kim JA, Son EJ, Youk JH, Chung TS, Park CS, et al. Preoperative prediction of the extrathyroidal extension of papillary thyroid carcinoma with ultrasonography versus MRI: A retrospective cohort study. *Int J Surg* (2014) 12(5):544–8. doi: 10.1016/j.ijsu.2014.03.003

29. Ryu YJ, Cho JS, Park MH, Yoon JH. Identifying risk factors of recurrence for clinically node negative papillary thyroid carcinoma with pathologic N1a. *BMC Surg* (2019) 19(1):78. doi: 10.1186/s12893-019-0541-5

30. Wang X, Lei J, Wei T, Zhu J, Li Z. Clinicopathological characteristics and recurrence risk of papillary thyroid microcarcinoma in the elderly. *Cancer Manag Res* (2019) 11:2371–7. doi: 10.2147/CMAR.S198451